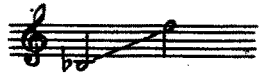


# В ДЫМКЕ ТЮЛЯ



Слова неизвестного автора

Ноты с сайта - [www.notarhiv.ru](http://www.notarhiv.ru)

Соч. 10, № 2

Tempo di valse

нар

rit. a tempo p

В дым - ке тю - ля

и в мо - ре цве - тов э - ти блед -

ны е па ры не сят ся.

И в ми нут ном *ten.* объ ять е без

слов, как во вла сти кры

ла тых ду хов,

от заб\_вень\_ я не мо\_ гут оч\_ нуть\_

This system contains the first line of music. The vocal line is on a single staff with a treble clef and a key signature of two flats. The piano accompaniment consists of two staves (treble and bass clefs) with a grand staff brace on the left. Dynamics include *f* and *p*.

- ся.

This system contains the second line of music. The vocal line continues on a single staff. The piano accompaniment continues on two staves. Dynamics include *p*.

*p*  
В зву\_ ках валь\_ са вол\_ шеб\_ на\_ я сеть.

This system contains the third line of music. The vocal line is on a single staff. The piano accompaniment is on two staves. Dynamics include *p*, *pp*, and *mf*.

В их у\_ га\_ ре влюб\_ лен\_ ны\_ е та\_ ют.

This system contains the fourth line of music. The vocal line is on a single staff. The piano accompaniment is on two staves. Dynamics include *p* and *mf*.

И кружатся — за-вид-но гля-деть, —

*cresc.*

буд-то веч-но хо-тят у-ле-теть, буд-то веч-но вер-

*ff*

- нуть — ся же-ла-ют.

Но сти-

*pp*

Мено mosso

- ха\_ет кру\_гом су\_е\_та.

*pp* *mf*

8

This system contains the first line of music. It features a vocal line in the upper staff and piano accompaniment in the lower two staves. The key signature has three flats (B-flat, E-flat, A-flat) and the time signature is 3/4. The lyrics are "- ха\_ет кру\_гом су\_е\_та." The piano part includes dynamic markings *pp* and *mf*, and an 8-measure rest in the right hand.

И смьч\_ков за\_ми\_ра\_ют у\_да\_ры...

*pp* *mf*

8

This system contains the second line of music. It features a vocal line in the upper staff and piano accompaniment in the lower two staves. The key signature has three flats and the time signature is 3/4. The lyrics are "И смьч\_ков за\_ми\_ра\_ют у\_да\_ры...". The piano part includes dynamic markings *pp* and *mf*, and an 8-measure rest in the right hand.

Пла\_чет зер\_ка\_по...

*mf* *pp* *p*

This system contains the third line of music. It features a vocal line in the upper staff and piano accompaniment in the lower two staves. The key signature has three flats and the time signature is 3/4. The lyrics are "Пла\_чет зер\_ка\_по...". The piano part includes dynamic markings *mf*, *pp*, and *p*.

За\_ла пу\_ста...

*p*

This system contains the fourth line of music. It features a vocal line in the upper staff and piano accompaniment in the lower two staves. The key signature has three flats and the time signature is 3/4. The lyrics are "За\_ла пу\_ста...". The piano part includes dynamic markings *p*.

*p*  
О - ста - ет - ся од - на

*mf*

тем - но - та.. Ис - че - за -

*rit.*

*p* *pp*

- ют воз - душ - ны - е па -

*a tempo*

*mf*

- ры.

*pp*

*dim.* *dim.* *ppp* *mf*